

How to upgrade FrSky Smart Port (S.Port) enabled products



Introduction

FrSky X series modules and receivers, as well as new generation sensors are featured by Smart Port (S.Port). All these products could be firmware upgraded through Smart Port easily.

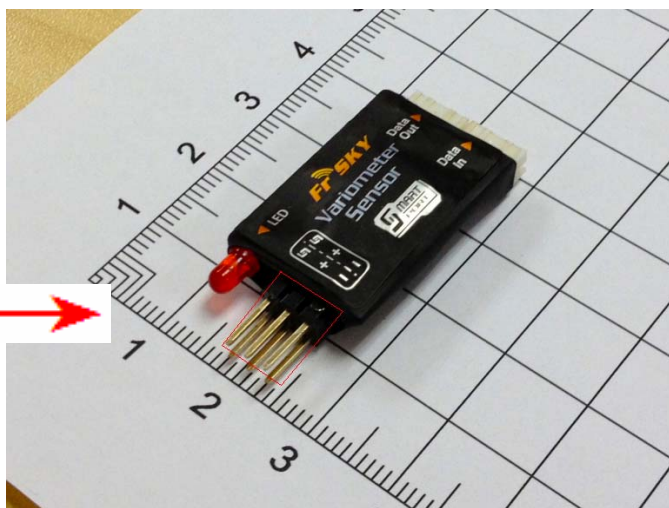
Smart Port on XJT



Smart Port on X8R



Smart Port on
Variometer Sensor



Tools

1. FrSky FrUSB-3/FUC-3 (FrSky Upgrade Cable)



2. SPC (FrSky Smart Port Converter)



3. Driver for XP or Win7/Vista: FrSky website www.frsky-rc.com – DOWNLOAD - Driver for XP or Driver for Win7 and Vista

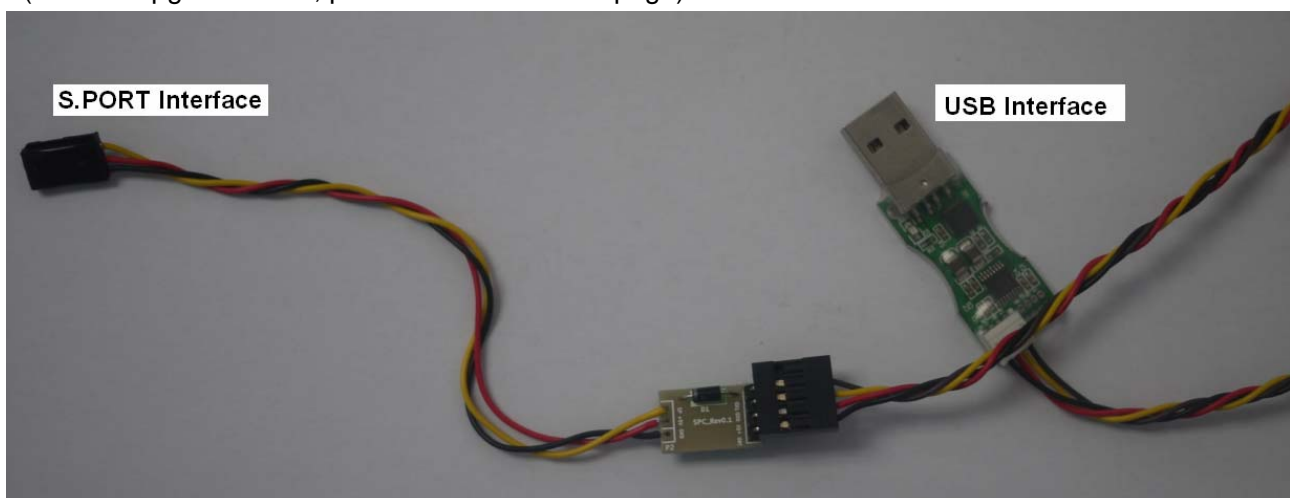
4. Upgrade ROM: FrSky website www.frsky-rc.com – PRODUCTS – category – required product – Download – Related Software

Steps

The upgrade procedure for all FrSky Smart Port enabled products is the same. Below we take X8R upgrade as an example.

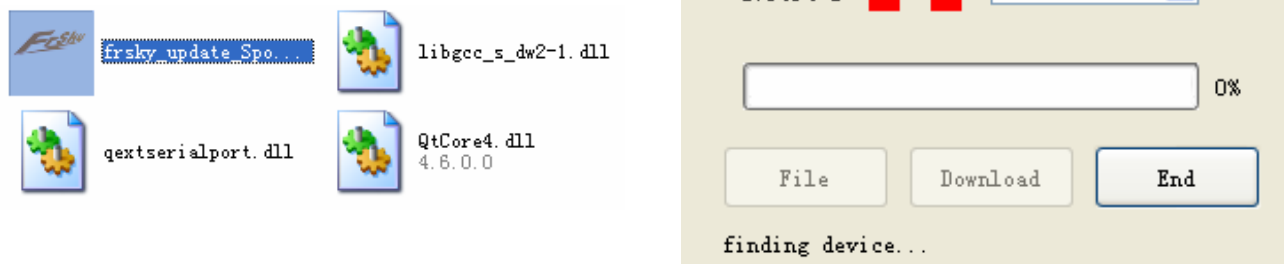
Step 1: Go to FrSky website www.frsky-rc.com, Download section, download and install the driver for XP or Win7/Vista.

Step 2: Connect SPC to FrUSB-3/FUC-3 as shown below, and then plug Plug FUC-3 into a USB port on the PC. (For DIY upgrade cable, please refer to the last page)



Note: GND pin on SPC goes to BLACK wire of FrUSB-3/FUC-3 to make sure the connection is correct.

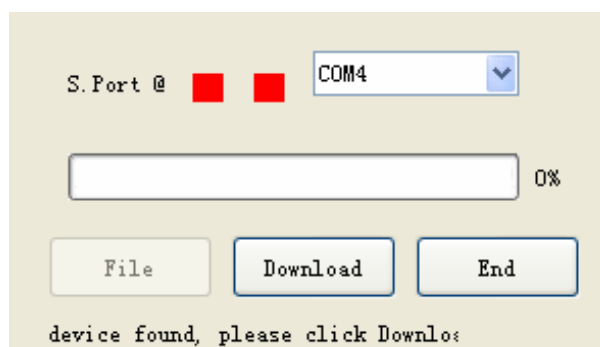
Step 3: Run "frsky_update_Sport.exe" program. Match the COM port number to the one assigned by computer. Click "File" button and select ROM Version.



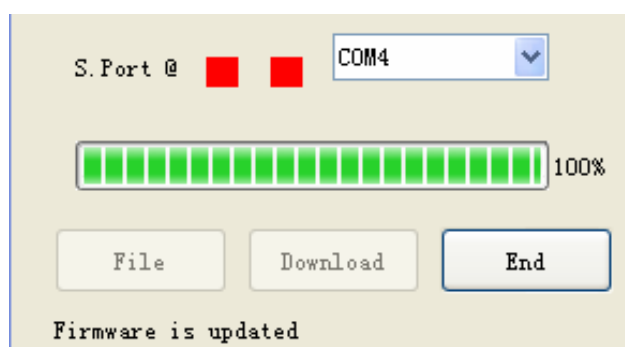
Step 4: Plug the S.PORT Interface of SPC to the Smart Port on X8R. (For XJT upgrade, you could place the Switch 1 and Switch 2 in either position).



Step 5: After "device found, please click Download", then click the "Download" button to start the upgrade.



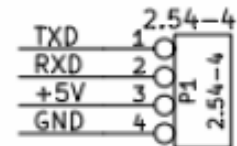
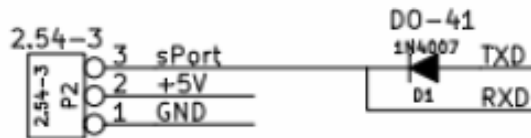
Step 6: Exit the process by clicking "END" button after "Firmware is updated".



Troubleshooting

- No COM port number shown in step 3: driver installed failure, please re-install the driver
- No “device found” in step 5: re-start the process from the beginning.

DIY the upgrade cable



Attention:

1. P1 is the interface of FUC-3
2. P2 is the interface of S.PORT
3. TXD/RXD is RS232 LEVEL