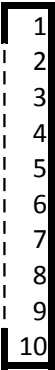
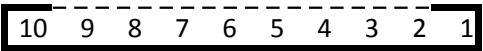


9XR motherboard connector pinout

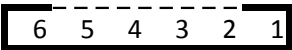
J1 Right Switches	Atmega
1 VCC (+5Volt)	21;52 VCC
2 ??	4051 pin 14 Y1
3 POT2	56 PF5
4 GND	22;53 GND
5 AIL-DR-SW	3 PE1
6 IDLE1-SW	18 PG3
7 GEAR-SW	6 PE4
8 TRAIN-SW	7 PE5
9 IDLE2-SW	8 PE6
10 GND	22;53 GND



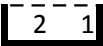
J21 Right Stick	Atmega
10 GND	22;53 GND
9 RV-Tr-Up	29 PD4
8 RV-Tr-Dwn	30 PD5
7 GND	22;53 GND
6 RH-Tr-Dwn	26 PD1
5 RH-Tr-Up	25 PD0
4 GND	22;53 GND
3 RH-Stick	61 PF0
2 RV-Stick	59 PF2
1 VCC (+5Volt)	21;52 VCC



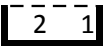
J20	Atmega
6 ??	
5 PPM-Out	10 PB0
4 ??	
3 GND	22;53 GND
2 Battery (+8..12 Volt)	
1 Buzzer	5 PE3



J2 LCD Backlight Power
2 negative (but not GND)
1 positive (but not Vcc)



J25 READY Power	Atmega
2 GND	22;53 GND
1 positive (but not Vcc)	



J22 Left Stick

10 GND
9 LV-Tr-Dwn
8 LV-Tr-Up
7 GND
6 LH-Tr-Up
5 LH-Tr-Dwn
4 GND
3 LH-Stick
2 LV-Stick
1 VCC (+5Volt)

Atmega

22;53 GND
28 PD3
27 PD2
22;53 GND
31 PD6
32 PD7
22;53 GND
58 PF3
60 PF1
21;52 VCC

10	9	8	7	6	5	4	3	2	1
----	---	---	---	---	---	---	---	---	---

J23 Left Switches

9 GND
8 TCUT-SW
7 ELE-DR-SW
6 RUD-DR-SW
5 GND
4 POT3
3 POT1
2 ??
1 VCC (+5Volt)

Atmega

22;53 GND
2 PE0
4 PE2
33 PG0
22;53 GND
55 PF6
57 PF4
4051 pin 15 Y2
21;52 VCC

9
8
7
6
5
4
3
2
1

ISP Flashing

1 MISO
2 VTG
3 SCK
4 MOSI
5 RESET
6 GND

Atmega

3 PE1
21;52 VCC
11 PB1
2 PE0
20 RST
22;53 GND

1	2
3	4
5	6